



INSPIRING EDUCATION INSPIRING LIFE

Installing Cyber printers PARIS (Mac OS X)



INSPIRING EDUCATION INSPIRING LIFE

CONTENU

1 Driver Install.....	3
2 Printer Install.....	7



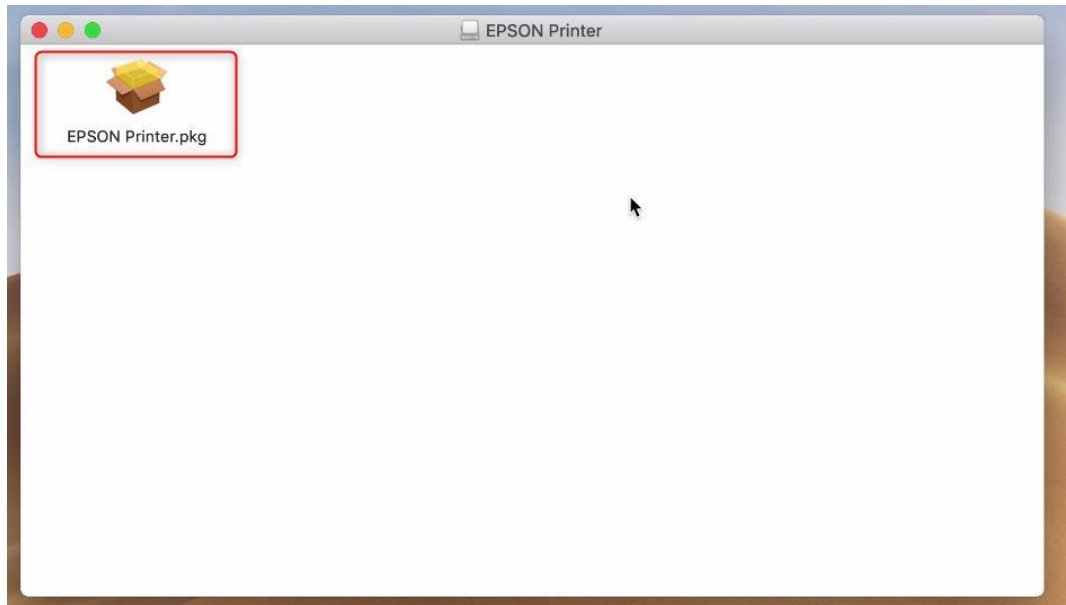
1. Driver Install

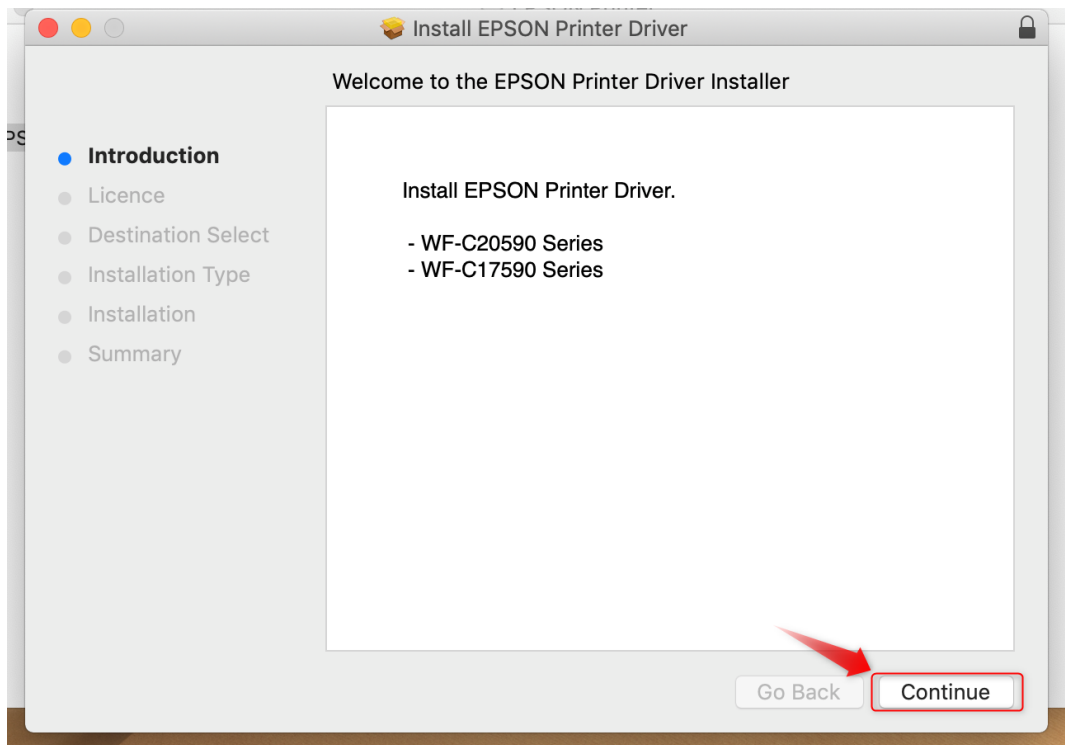
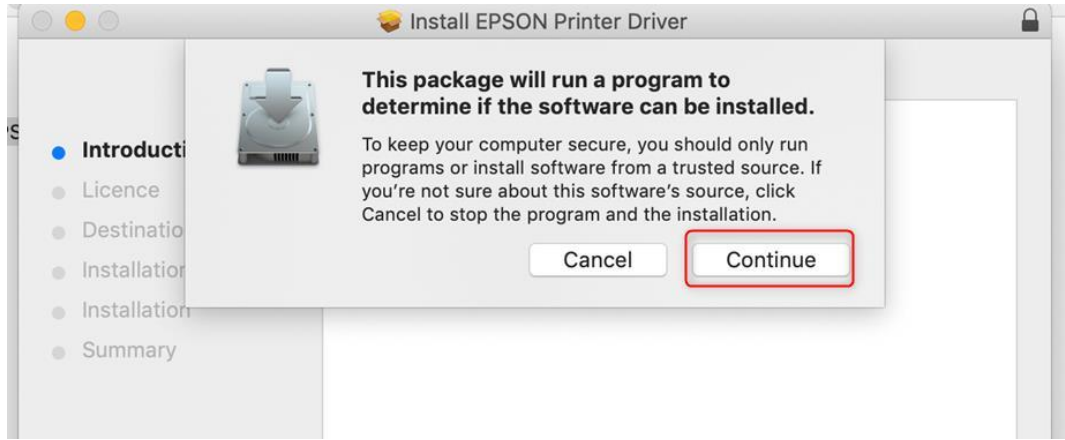
You must be connected to the TBS wireless during the entire process

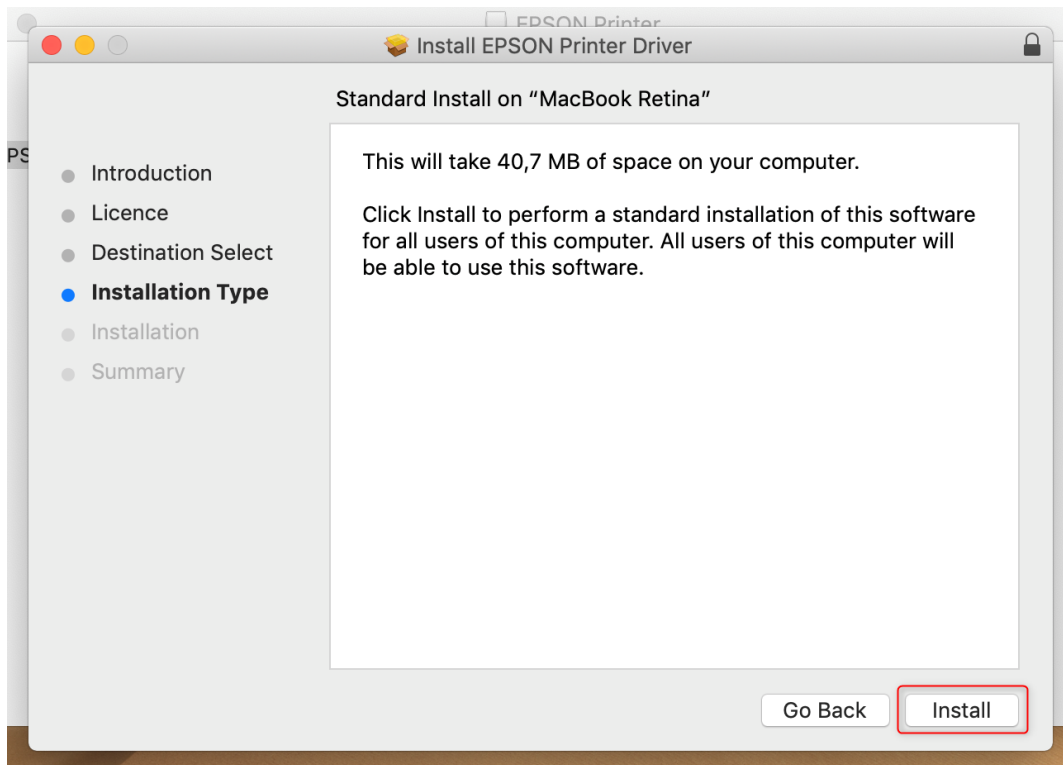
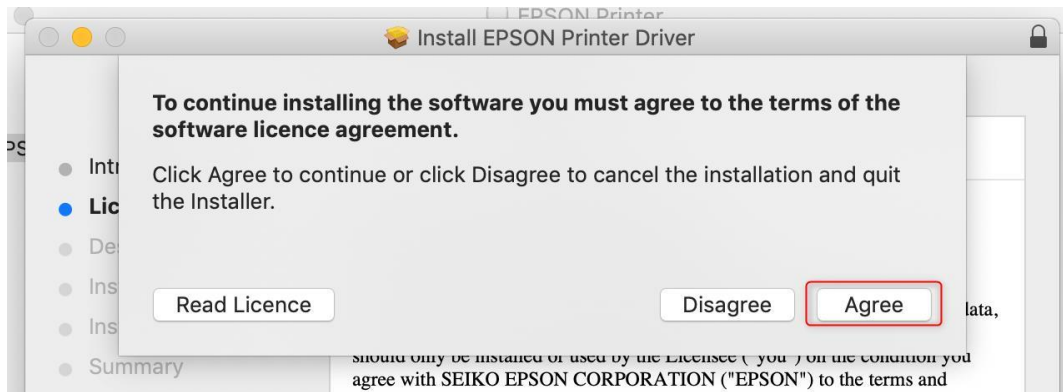
Download the driver with the link below

[Printer Driver.dmg](#)

Double-click on the downloaded file:

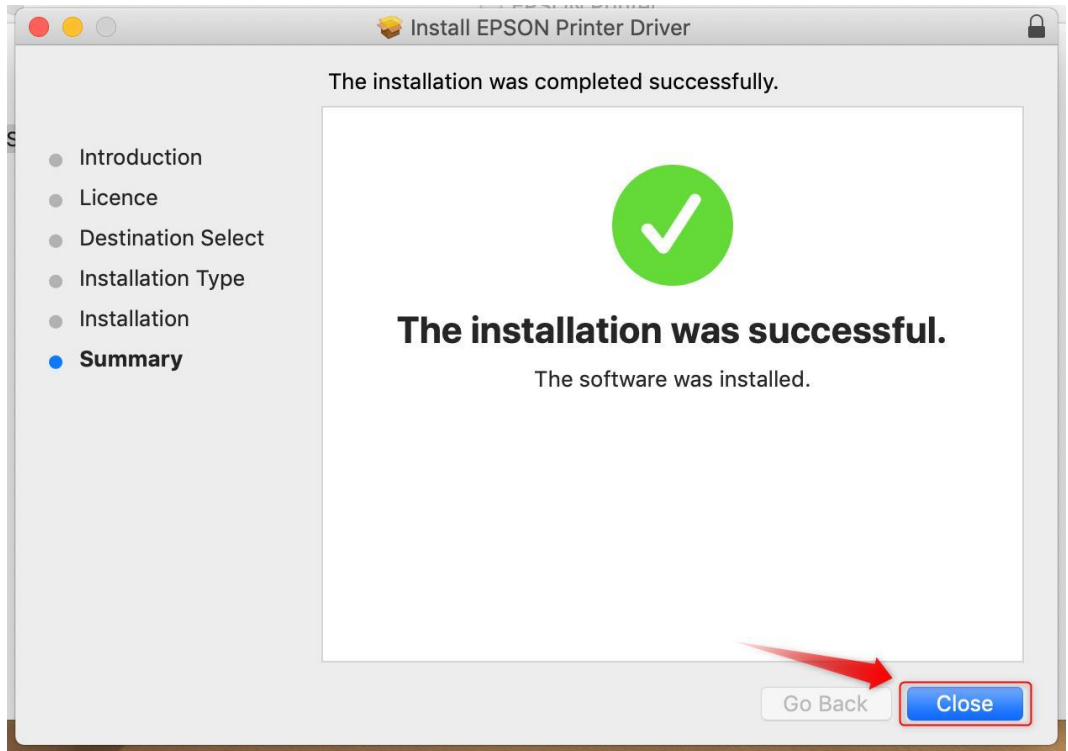
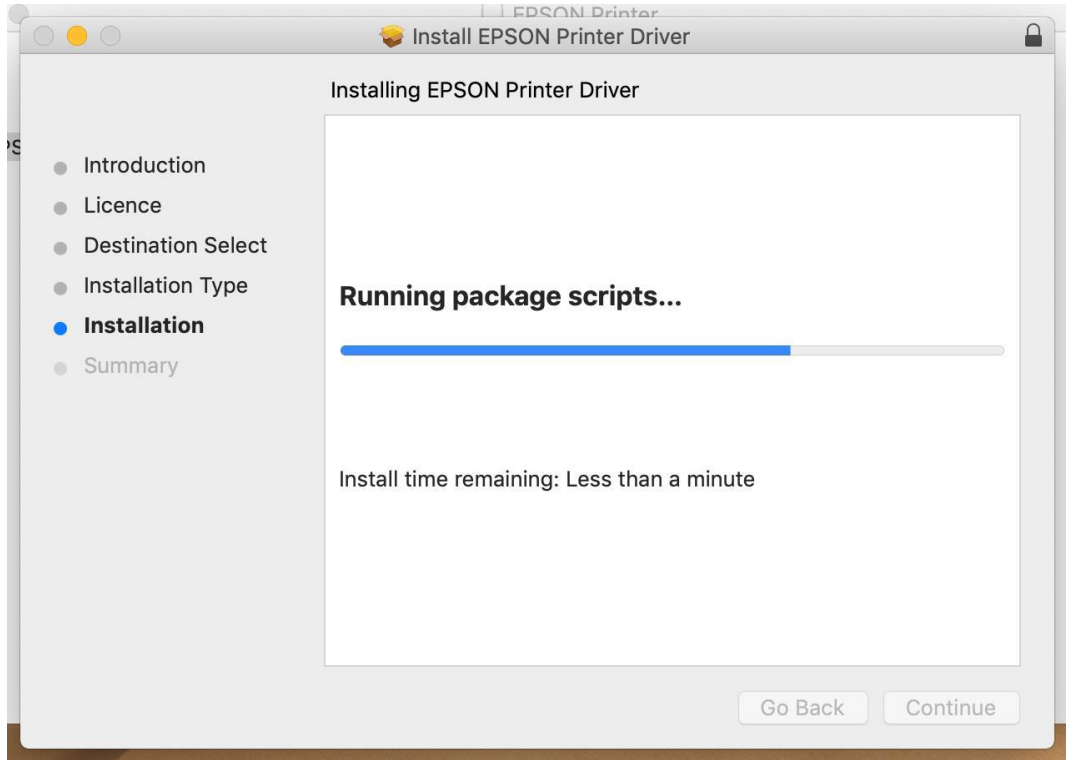








INSPIRING EDUCATION INSPIRING LIFE



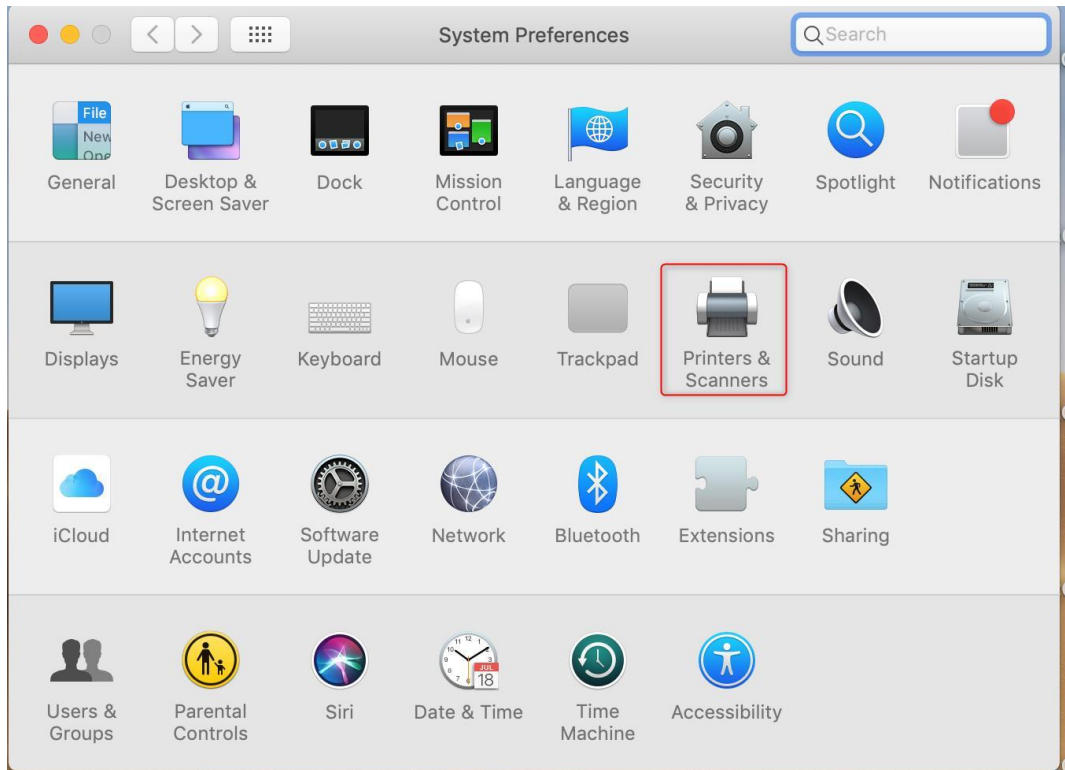
2. Printer Install

You can watch this video: [Printer install.mov](#)

Or Open Apple menu

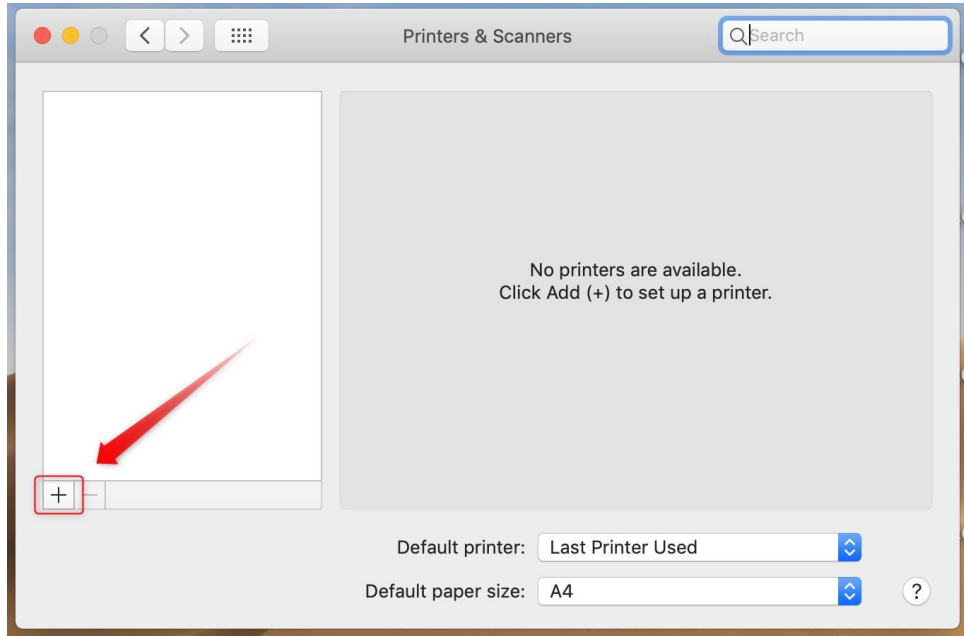


Open Printers & scanners

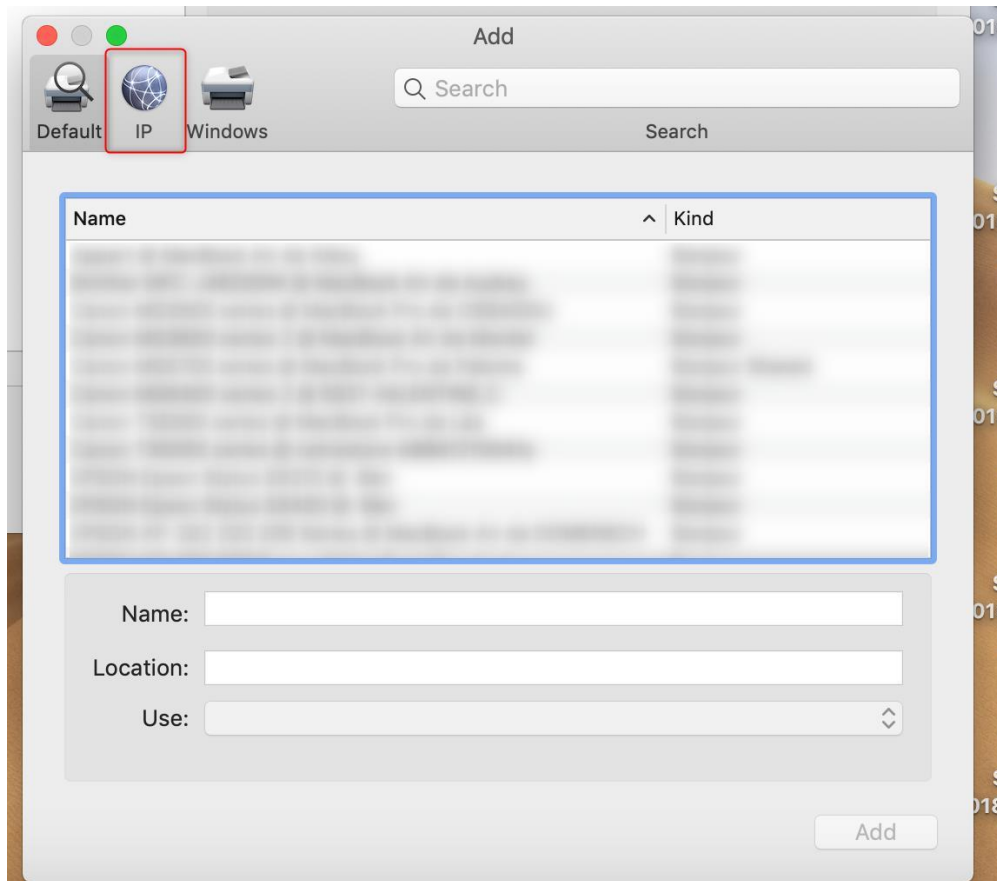




Click “+”



Click “IP”



- Address **192.168.68.87**
- Check that protocol matches **Line Printer Daemon – LPD**
- Type in **the name matching the address of the first step**
- **Wait for “EPSON WF-C20590 Series”** to show up or manually select “Select Software...” then look for “EPSON WF-C20590 Series” in the list then click “OK



Once the install process is done, you can print from your computer while connected to WIFI TBS wireless network.